



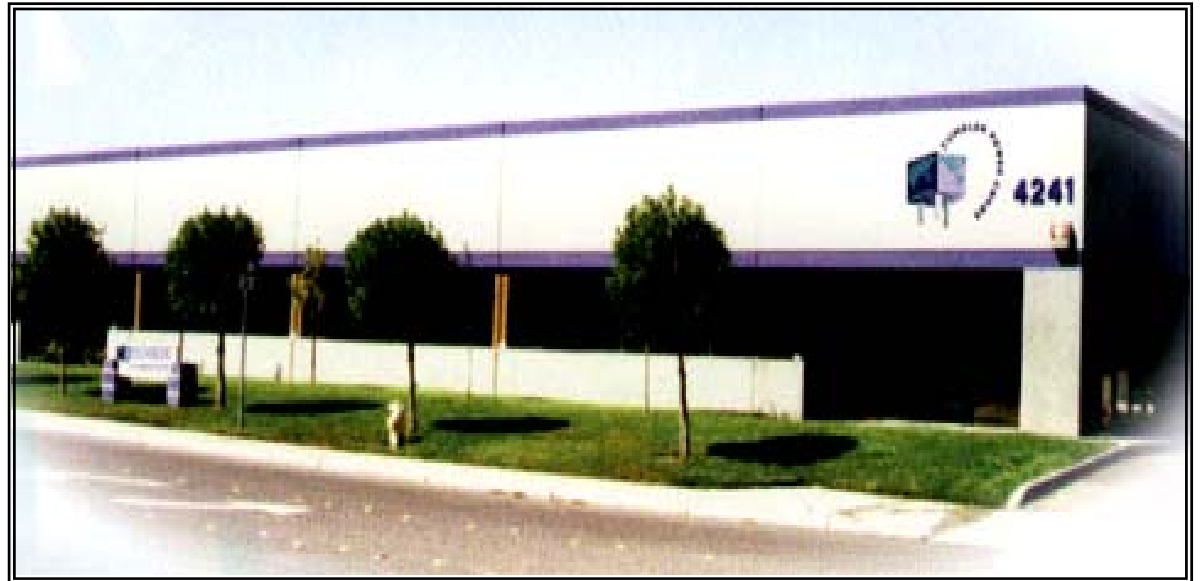
TUMBLER CORPORATION

dba CHING CHENG WIRE MATERIAL CO., LTD.

- **Company Profile**
- **Quality Policy – Zero Defect**
- **Customer Base**
- **Products**
- **Worldwide Listings**
- **Accomplishment**
- **Advantages**
- **Road Map**

Specialize in Power Cords

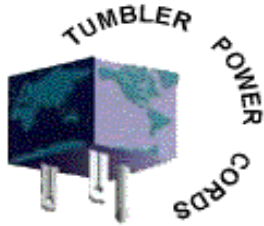
The Bridge to Your Power!



A Women Business Enterprise Company



2
0
0
7



TUMBLER CORPORATION

dba CHING CHENG WIRE MATERIAL CO., LTD.

Quality Policy

- Zero defect is our responsibility.
- **ISO 9001:2000 Certified by BSI Quality Management System.**



- **Power Cords Approved by International Safety Listing Agents.**

The Bridge to Your Power!





TUMBLER CORPORATION

dba CHING CHENG WIRE MATERIAL CO., LTD.

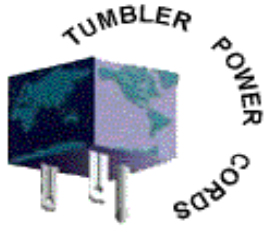
Company History

- 1980 Ching Cheng Power cord manufacturer was established in Taiwan.
- 1982 Safety approvals obtained from various international agencies to start global marketing
- 1988 Tumbler Corp. was established in Fremont, California as the US Sales and Distribution main office.
- 1991 A high volume manufacturing factory was established in Guangdong, China.
- 1992 Two vertical integrated factories were established to produce power cords from copper rod, PVC media, etc.
- 1995 Thailand factory was established, mainly, for wire harness and VAR operations.
- 2001 Expanded facilities in China to increase production capacity, reduce cost, and improve quality.
- 2002 All manufacturing facilities became ISO 9001:2000 certified.
- 2005 Implemented ISO 14001 to support environmental protection.
- 2005 Women Business Enterprise (WBE) Certified

2
0
0
7

The Bridge to Your Power!





TUMBLER CORPORATION

dba CHING CHENG WIRE MATERIAL CO., LTD.

Global Network



U.S. Corporate Headquarters

4241 Business Center Drive
Fremont, California 94538
United States of America

U.S. East Coast Sales Office

618 Main Street Suite 1.
Coventry, Rhode Island 02816
United States of America

Taiwan Headquarters

No. 1. Alley 50, Lane 305,
Chung Shan Rd., Sec.3
Tantze Hsiang, Taichung
Taiwan, R.O.C.

Hong Kong Liaison Office

Flat K 1/F Kwong Wing House,
18 Shantung St., Kowloon
Kowloon, Hong Kong

Thailand Factory

207 Mu 3, Laemchabang Ind.
Estate, Tambol Tungsukkala
Aumper Sriracha 20230
Cholburi, Thailand

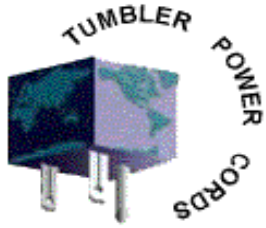
China Factory

Po-tou Industrial Area
Hu-Men DongGuan City
GuangDong, China



The Bridge to Your Power!

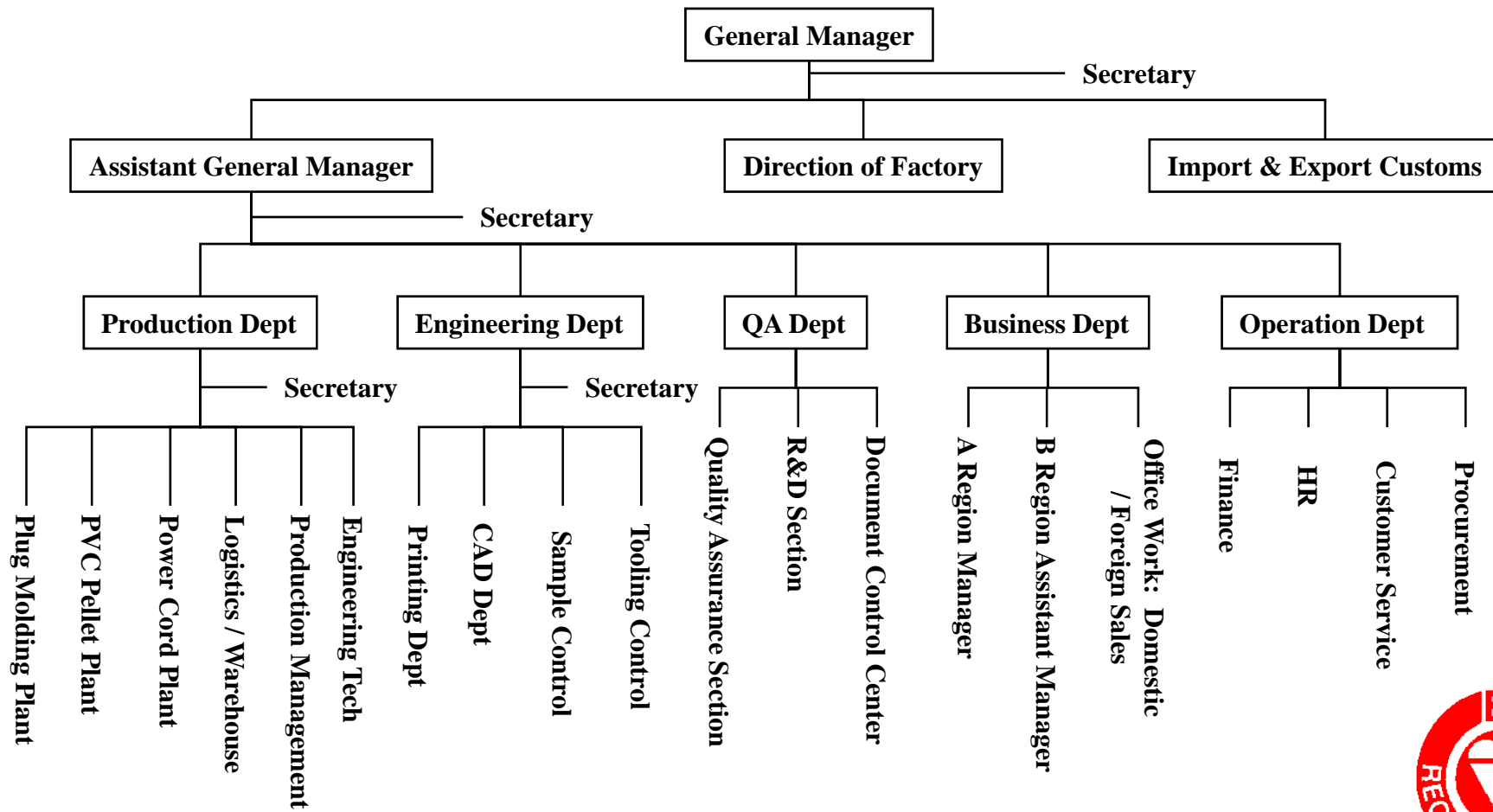
2
0
0
7



TUMBLER CORPORATION

dba CHING CHENG WIRE MATERIAL CO., LTD.

Organization Chart



The Bridge to Your Power!

2007



TUMBLER CORPORATION

dba CHING CHENG WIRE MATERIAL CO., LTD.

Market Served

Consumer Electronics

- TV
- Digital Converters/Receivers
- VCR/DVD
- Audio Systems
- Fax Machines
- Other - Fans, Heaters, etc.

Appliance

- Appliance (Large) - Refrigerator etc
- Appliance (Small) - Microwave, Toaster,
- Appliance (Other) - Vacuum Cleaner
- Industrial - Hand Tools, Ballast, etc.
- Personal Hygiene Products.

Telecommunications

- ATM
- Switches

Equipment

- Automotive
- Medical
- Electronics

Networking

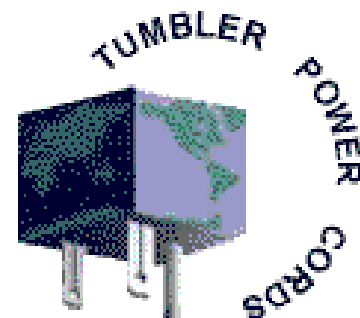
- Servers
- Hubs
- Routers

P.C. Peripherals

- Printers/Plotters
- Scanners
- UPS
- Power Supplies

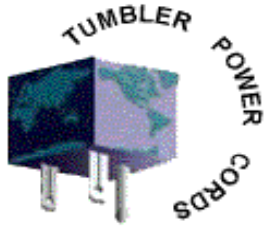
Personal Computer

- Monitors
- PC Main Power Supply



The Bridge to Your Power!





TUMBLER CORPORATION

dba CHING CHENG WIRE MATERIAL CO., LTD.

Customer Base

• **ASIA -- 20%**

Sanyo, LG, Panasonic, AIWA, Sony,
Daistar, FoxConn., Samsung,
Polycom ...

• **AUSTRALIA – 5%**

Email Washing, Dick Smith,
Carinda ...

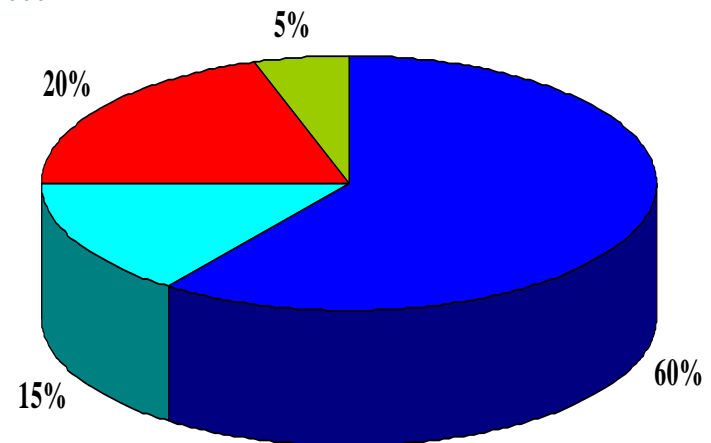
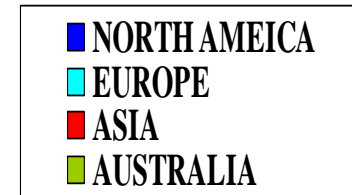
• **EUROPE – 15%**

Baeck, Robert Bosch, Cabcon,
Tecno, Taller Casals, Vistel ...

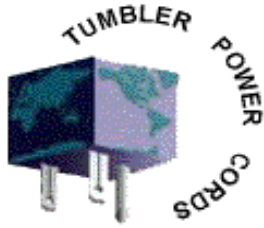
• **NORTH AMERICA -- 60%**

Sun Microsystems, Cisco, Intel, Apple, Ascent Tech, Bissell, Black&Decker,
Cypress, Dial Mfg., Hughs Network, Tektronix, Oki Data, Sunbeam, Modus Link,
Xerox ...

APW, Celestica, EDS, EMS, FoxConn, Jabil, Sanmina, Solectron, Arrow
Electronics ...



The Bridge to Your Power!



TUMBLER CORPORATION

dba CHING CHENG WIRE MATERIAL CO., LTD.

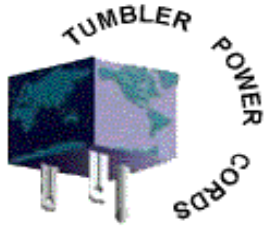
Total Quality Management

- **Company-wide commitment to continuous performance improvement, product quality, and meeting customer requirements.**
- **All manufacturing facilities are ISO 9001:2000 certified.**
- **Reducing development cycle times and product and service costs on new custom designed power cords.**
- **Proactive Oriented - Problems must be prevented, not just fixed.**
- **Emphasis in continuous improvement rather than maintenance.**
- **Zero defect. Products are 100% tested. Defected item are eliminated immediately.**
- **Doing it right the first time.**
- **100% Customer satisfaction**

2
0
0
7

The Bridge to Your Power!





TUMBLER CORPORATION

dba CHING CHENG WIRE MATERIAL CO., LTD.

Safety Listings and Certificates

- Safety agency approvals from 39 countries, 5 continents.
- Full library of safety regulations from UL, CSA, VDE, BSI, CCC, and PSE.
- EMI/RFI compliant and CE certified for products required by the FCC and EEC.
- Manufacturing facilities are certified by US, European and Asian agencies.
- Continuous updates of country requirement changes and certificate maintenance.
- Tumbler will aid customers in obtaining certification for their custom power cords.



The Bridge to Your Power!





TUMBLER CORPORATION

dba CHING CHENG WIRE MATERIAL CO., LTD.

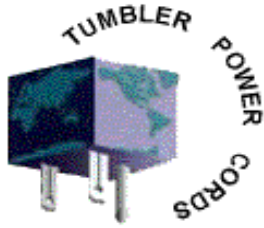
Manufacturing Facilities



2
0
0
7

The Bridge to Your Power!





TUMBLER CORPORATION

dba CHING CHENG WIRE MATERIAL CO., LTD.

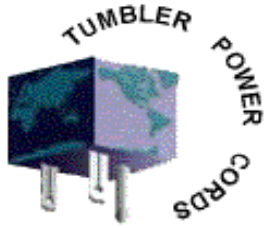
Products

- **Over 130 types of plug and connector designs and patents**
- **Plug and connector types comply to worldwide specifications: NEMA, IEC, 2 or 3 conductors, polarized, locked, hospital and various industry usages.**
- **North America (UL & CSA) cord types: 10~18 AWG, SPT, SVT, SJT and rubberized cordages in various permutations for oil, weather, water resistance, temperature and voltage.**
- **International (BSI, CEPEC, VDE, etc) cord types: 1.5~0.75mm², H03VV-F, H05VV-F, VCT, VFF, etc.**
- **Customized power cords: Plugs, connectors, terminals, shielded, length, strain relief, stripped end, color of outer and inner jackets, high temperature, etc.**
- **Customer design aid: Design drawings provided, safety approvals and fabricate tools in house to shorten the lead time and process.**

2
0
0
7

The Bridge to Your Power!





TUMBLER CORPORATION

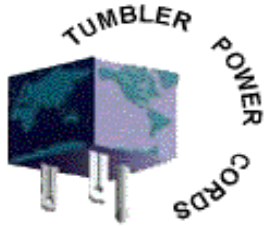
dba CHING CHENG WIRE MATERIAL CO., LTD.

Description	Facilities Fact Sheet 2005			
	USA	Taiwan	China	Thailand
Function	Sales/ Engineering	Sales/Engineering/ Manufacturing	Sales/Engineering/ Manufacturing	Sales/Engineering/ Manufacturing
Size (sq. ft.)	22,000	20,000	216,000	72,000
Resources (Staff)	15	50	850	250
Sales (in US\$1000)	12,000	4,000	34,000	6,500
Assets (in US\$1000)	4,500	950	48,000	18,000
Annual capacity (Unit in 1000)	N/A	10,000	84,000	17,000
Utilization (%)	N/A	71	74	77
Year Established	1988	1980	1991	1995

2
0
0
7

The Bridge to Your Power!





TUMBLER CORPORATION

dba CHING CHENG WIRE MATERIAL CO., LTD.

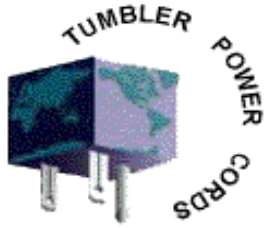
Major Equipment List

Description	Quantity
Extruding Machine (plastic)	7
Max Drawing Machine	1
Medium Drawing Machine	1
Fine Drawing Machine	12
Bunch Stranding Machine	14
Cabling Machine	3
Extruding Machine	7
Wire-Cutting Machine	6
Stripping Machine	52
Crimping Machine	84
Molding Machine	56

2
0
0
7

The Bridge to Your Power!

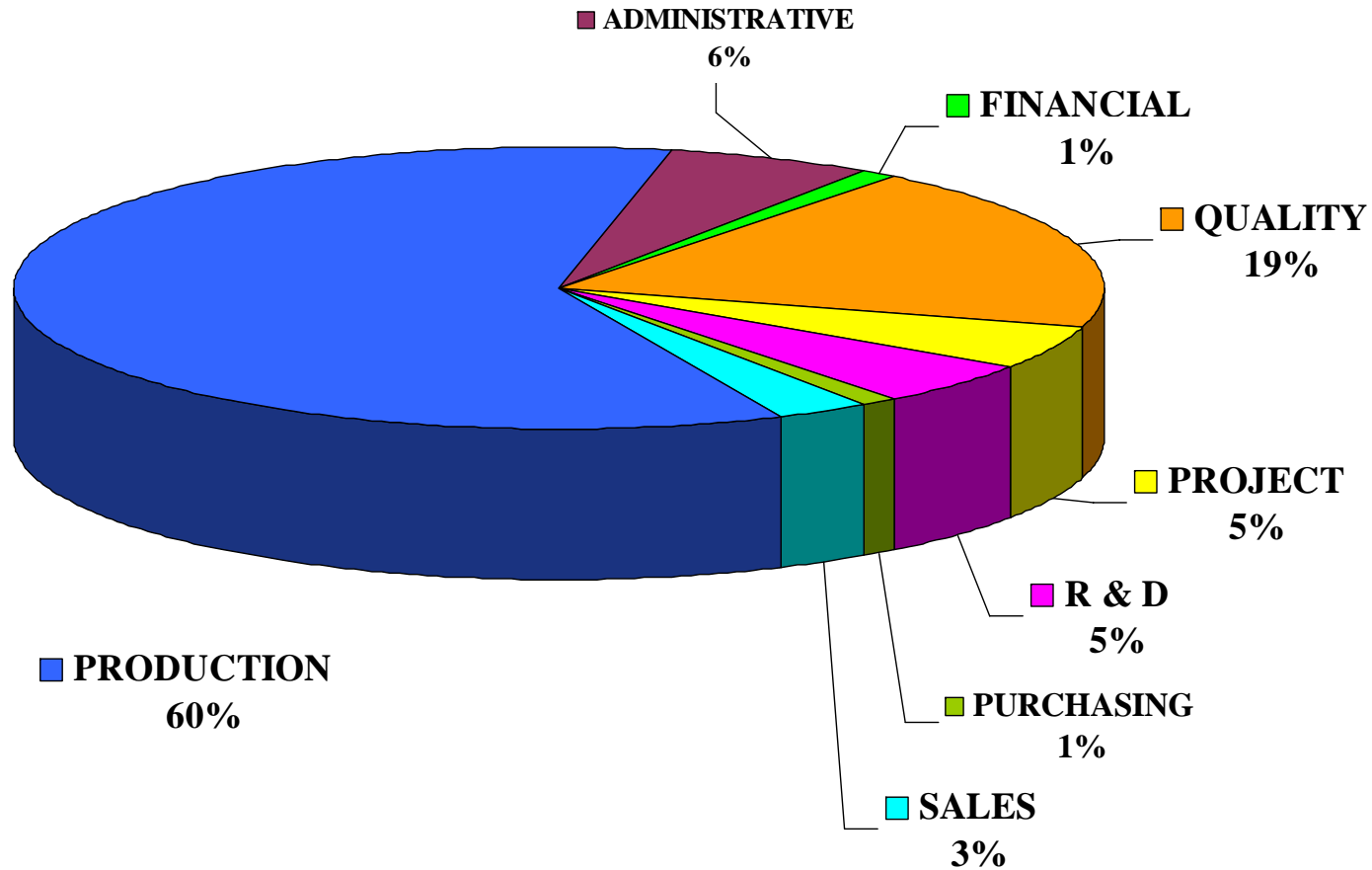




TUMBLER CORPORATION

dba CHING CHENG WIRE MATERIAL CO., LTD.

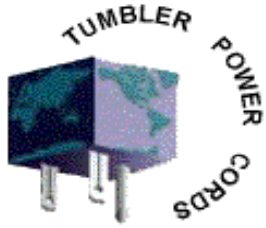
Employee Distribution



2007

The Bridge to Your Power!



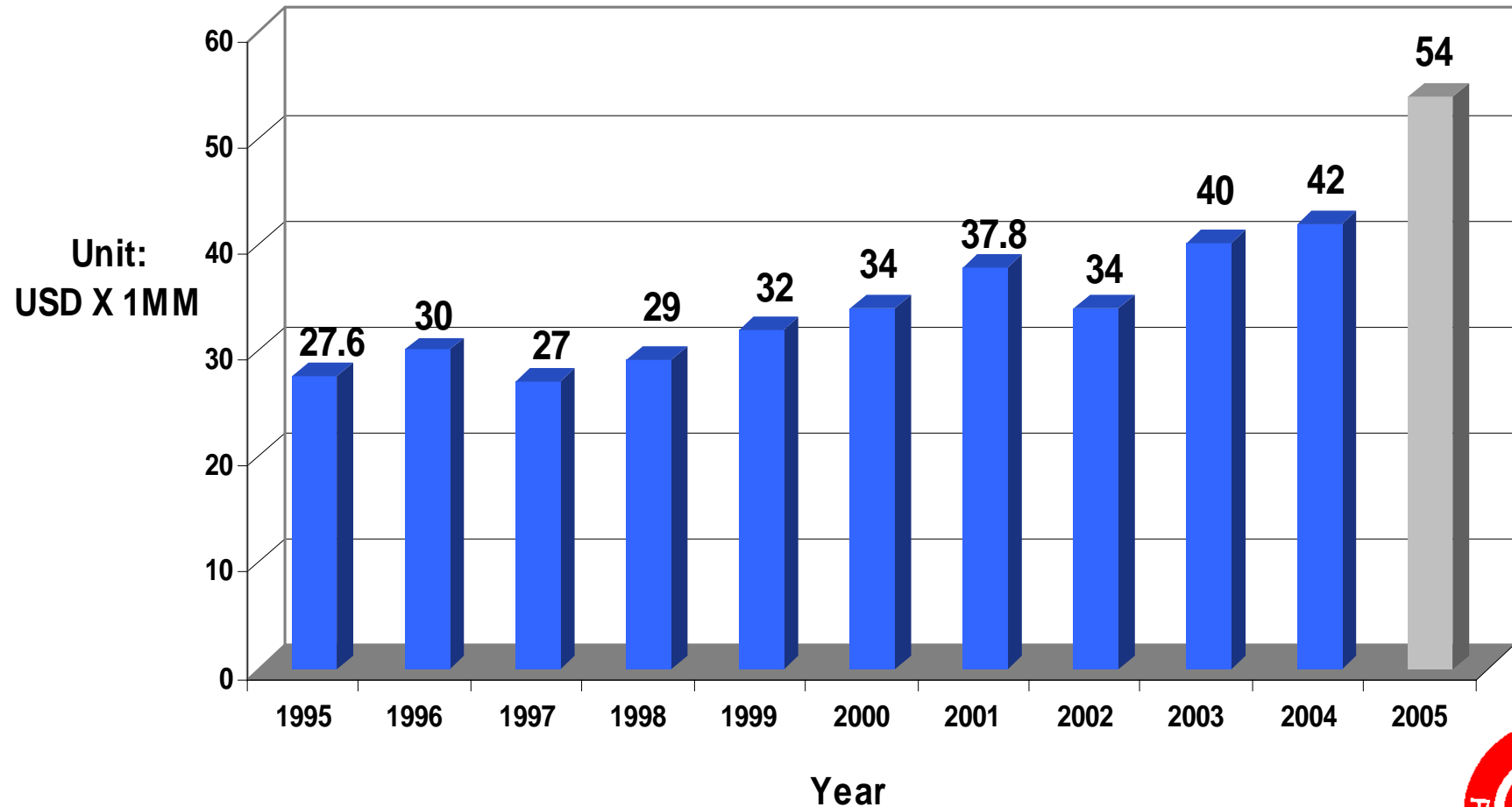


TUMBLER CORPORATION

dba CHING CHENG WIRE MATERIAL CO., LTD.

Accomplishment

Total Sales Revenue



The Bridge to Your Power!

2
0
0
7



TUMBLER CORPORATION

dba CHING CHENG WIRE MATERIAL CO., LTD.

Our Advantages

- **Power Cord Leader**

Over 20 years of experience in the power cord industry. Created a satisfied customer base which includes Tier 1, Top 500 and major OEMs companies worldwide.

- **Extremely Price Competitive**

Total vertical integrated manufacturer is capable of controlling the quality and cost from raw materials to the finished product.

- **On Time Delivery for Quality Products**

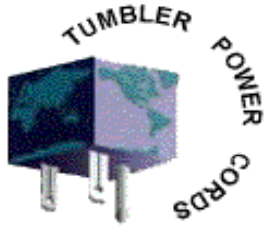
Total Quality Management and International Logistics system to fit into your product quality and delivery requirements.

- **Technology leader**

Able to support your custom design on specification, materials, lead-time, cost and safety agencies' requirements.



The Bridge to Your Power!



TUMBLER CORPORATION

dba CHING CHENG WIRE MATERIAL CO., LTD.

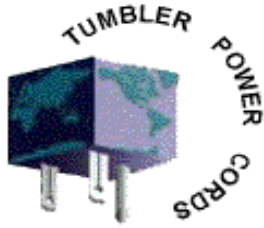
Road Map

- **Maintain Leadership in Pricing, Quality, Service and Technology.**
- **Research in engineering technology for advanced design demands.**
- **Work with manufacturing representatives to support local customers.**
- **Exposure to medical and various industrial power cord markets.**
- **Worldwide Logistics support system to deliver quality product on time.**
- **Expand direct coverage to Southern Asia from our Thailand factory.**
- **Expand direct coverage to Western European Countries.**
- **Global safety agency network updates safety requirements continuously.**
- **Expansion projects - two new facilities in East & N.E. China.**
- **Implement ISO 14001 and maintain lead free, RoHS requirements.**
- **Expansion of customer accounts and development of various product lines.**



The Bridge to Your Power!

2
0
0
7



TUMBLER CORPORATION
dba CHING CHENG WIRE MATERIAL CO., LTD.

*One of the Largest
Power Cord
Suppliers in the US.*

Connect to Tumbler.

The Bridge to Your Power!



2
0
0
7